

INTERMODAL ANTI-THEFT SOLUTIONS

A Complete Line of Security Seals, Locks and Tamper Tape



**SECURE SHIPPING CONTAINERS, VAN TRAILERS,
TRACTOR-TRAILERS AND CARGO**

At Sea. Over Land. On Rail.



ONE-TIME USE SEALS, CLAMPS & TAMPER TAPE

BOLT SEALS



- Higher level of protection than I or S seals at an economical price
- Available with serial number printed on the barrel only or on both the barrel and the pin for added security

<u>PART #</u>	<u>PACKAGING</u>	<u>CLASS</u>	<u>NOTE</u>
3202-2940	250 pcs./box	H	Anti-Spin

FLAT METAL STRAP SEALS



- Serial number embossed on strap
- Indicative seals with 50 – 100% higher pull-apart strength than plastic seals
- Easy-to-use and zinc-plated for corrosion protection

<u>PART #</u>	<u>PACKAGING</u>	<u>CLASS</u>
3202-6539	2,500 pcs./box	I
3202-6977	1,000 pcs./box	I

WIRE CABLE SEALS (Push-through type)



- Self-locking design allows for size-adjustable loop
- Features serial number printed on body and galvanized, flexible cable
- Cable frays with cut attempt

<u>PART #</u>	<u>SIZE</u>	<u>PACKAGING</u>	<u>CLASS</u>
3202-6547	1/8" x 12"	300 pcs./box	I
3202-6550	3/32" x 12"	500 pcs./box	I
3202-6559	3/32" x 48"	300 pcs./box	I
3202-6565	9/64" x 12"	500 pcs./box	H

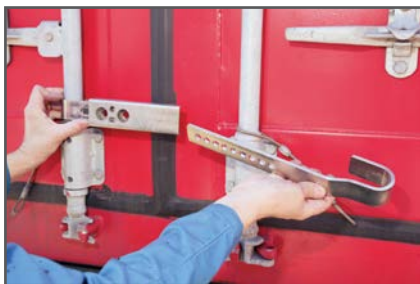
WIRE CABLE SEALS w/ Fixed Lock



- Wire cable is difficult to cut with bolt cutters
- Many possible connections to secure door rods and latches
- Available in different sizes and lengths

<u>PART #</u>	<u>SIZE</u>	<u>PACKAGING</u>	<u>CLASS</u>
3202-2154	3/16" x 12"	250 pcs./box	S
3202-2944	3/16" x 16"	100 pcs./box	S
3202-2945	1/16" x 48"	300 pcs./box	I
3202-2946	1/4" x 45"	50 pcs./box	H

DOOR LOCKING CLAMP BARRIER SEAL



- When extra security is required
- Easy to fit and lock with minimum slack
- Locking bushing cannot be cut with bolt cutters

- Removed by cutting the clamp with power tool or torch
- Cannot be bent off with crowbar or split with freon

<u>PART #</u>	<u>PACKAGING</u>	<u>CLASS</u>
3202-2952	10 pcs./box	H

ONE-TIME USE SEALS, CLAMPS & TAMPER TAPE

INDICATIVE LABEL SEAL (VOID type)



- Fast, simple, inexpensive solution to indicate unauthorized opening of containers by applying one label over both swing doors at the seam
- Removal and attempted replacement of seal results in visible indication of entry
- Strong adhesive qualities and weather-resistant
- Lock bolt spins and is too short for bolt cutters

PART #: 3202-2947
PACKAGING: 250 pcs./roll

PLASTIC SEALS w/ Flags



- Inexpensive solution with added toughness
- Fast and easy-to-use
- Choice of serialized identifiers or barcodes printed on flag
- Sold in increments of 100 pcs./bag

<u>PART #</u>	<u>SIZE</u>	<u>PACKAGING</u>	<u>CLASS</u>
3202-6352	1/4" x 12-7/8"	2,000 pcs./box	I
3202-6562	1/16" x 8-11/16"	1,000 pcs./box	I
3202-6563	1/16" x 7-3/8"	5,000 pcs./box	I
3202-6579	7/32" x 12-3/16"	1,000 pcs./box	I
3202-6835	3/8" x 15-11/32"	1,000 pcs./box	I

WHEEL LUG NUT INDICATIVE SEAL



- Fast, easy and inexpensive solution that helps shippers comply with U.S. Customs requirements to prevent use of tires for contraband smuggling
- Discourages tire theft
- Cannot be removed intact and pushed back on threads
- Non-removable bar code label on inside cover
- Reusable until tire is replaced

- Superior 3-piece design secures seal firmly — even on short threads
- Tested and favored by U.S. Customs for functional safety
- Available for 3/4-10 or M22-1.5 threaded studs

PART #: 3201-1326 (for 3/4-10 stud)
 3201-2988 (for M22-1.5 stud)

PACKAGING: 125 sets/box

INDICATIVE SECURITY VOID TAPE for Cargo Packaging



- Fast, simple, inexpensive solution to indicate unauthorized opening of packaging
- Removal and attempted replacement of tape results in visible indication of entry

PART #: 3202-2958

PACKAGING: 250'/roll
 60 rolls/box

REUSABLE SECURITY SOLUTIONS

LOCK ROD HANDLE BARRIER SEAL



- Ideal for fleets and all owner-operated units
- Prevents turning of the lock rod and the drilling of the handle rivet
- Very easy to fit and lock with key
- Lock bolt spins and is too short for bolt cutters

PART #: 3203-2950 (Complete Set)
3203-2949 (Key Lock Only)

PACKAGING: 10 sets/box

CONTAINER DOOR BARRIER SEAL w/ KEY



- Ideal for fleets and all owner-operated units
- Heavy-duty 5-part reusable lock rod clamp secured with special key-operated lock
- Secures one lock rod on each door to heavy duty flatbar
- Lock bolt spins and is too short for bolt cutters

PART #: 3203-2951 (Complete Set)
3203-2949 (Key Lock Only)

PACKAGING: 6 sets/box

KING PIN LOCK



- Covers king pin with a steel tube that effectively prevents hook-up of a van trailer, flatbed or chassis to tractor
- Installation clearly indicated with yellow tag identifier

PART #: 3203-2954-KA-KIT (Keyed Alike w/ Tag)
3203-2954-KA (Keyed Alike w/o Tag)

PACKAGING: Each

761851-E | rev. 2020-04-29



BUFFERS USA®

Securing Your Containers. Protecting Your Cargo.
At Sea. Over Land. On Rail.™

904.696.0010 • Fax: 904.696.0019
Sales@BuffersUSA.com • www.BuffersUSA.com
10180 New Berlin Road • Jacksonville, Florida 32226

WAREHOUSES: Jacksonville, FL • Houston, TX • Detroit, MI • Los Angeles, CA

