

ABSORBAG®

SUPERIOR MOISTURE CONTROL FOR BOTH DRY AND MOIST CONTAINERIZED CARGO

HOW IT WORKS

1. Calcium chloride behind an absorption grid aggressively removes moisture from the air.
2. Moisture turns into brine and is permanently trapped in a plastic collector during the entire voyage - preventing re-evaporation.

UNIQUE FEATURES

- Patented technology creates a damage-free environment for both moist and dry cargo within the shipping container—during an entire intermodal journey at sea, on land and over rail.
- Provides wider safety margins to protect cargo during both short and long voyages under a broader range of conditions.
- Quick and easy installation, removal and disposal.

CARGO APPLICATION

For use with dry cargo such as steel and aluminum coils, machinery and all kinds of consumer goods; as well as moist cargo, typically agricultural commodities such as hay, coffee, cocoa, peanuts, beans and sugar.

CARGO LOAD CONFIGURATION

- For any type of cargo that allows about 4" space (100 mm) between the cargo and the sidewalls and not loaded higher than about 5' (1500 mm) from the floor.
- Most effective with 15" — 20" (400 — 500 mm) free space between ceiling and cargo.

PRODUCT SPECIFICATIONS

Units Needed

<u>Container Size</u>	<u>Dry Cargo</u>	<u>Moist Cargo</u>
20'	4-8	8-12
40'	8-12	12-20

Collection Capacity

Up to 2.25 liters of brine water

Working Temperatures

-4° to + 150° F / - 20° to + 90° C

Size

H: 51" / 1300 mm
W: 5" / 125 mm
D: 2" / 50 mm

Weight

3.4 lbs / 1.6 kg

Disposal

Made only of non-toxic and recyclable materials (PE-PP) plastics and Calcium Chloride)

How to Install

(See Other Side)

HOW TO INSTALL THE ABSORBAG®



1 The ABSORBAG® is designed to hang in the loops located at the top of the container wall panels when the cargo load configuration allows about 4" space (100 mm) between the cargo and the sidewalls--and is not loaded higher than about 5' (1500 mm) from the floor.



2 Unfold the ABSORBAG®. Note: if the ABSORBAG® is individually lined, cut open the liner bag. If the box is bulk lined for 12 ABSORBAGS and not all are used, remember to re-close the liner bag in the box.



3 Twist the hook off from the back of the ABSORBAG®...



4 and fit it on the back non-printed side ...



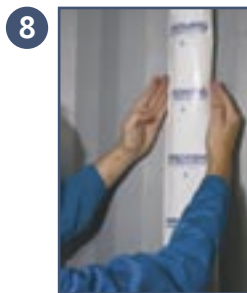
5 by pushing it up in the slots until you hear a click.



6 Use a stepladder to hang the ABSORBAG® by placing the hook onto the steel loop above the corrugations on the wall panels of the container.



7 Pull down on the hook until the hook is all the way down on the loop.



8 Open up the lower part of the ABSORBAG® by pressing the sides together. This will allow the salt-water brine to drip into the bottom half of the Absorbag.

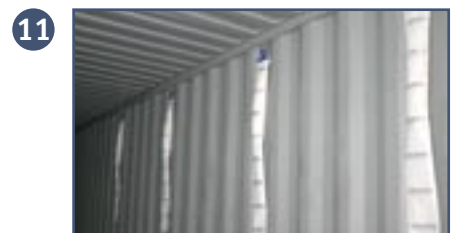


9 Make sure the wall surface is clean...

then remove the paper covers from the sticky pads.



10 Press the ABSORBAG® onto the wall, using the two sticky pads on the back to secure the ABSORBAG® to the corrugation. Gently press the sides of the lower part of the ABSORBAG® again to allow the salt-water brine to drip into the bottom half of the ABSORBAG®.



11 Hang the ABSORBAGS evenly on both sides of the container.

BUFFERS USA™ 

Securing Your Containers. Protecting Your Cargo.

Buffers USA Inc.
10180 New Berlin Road
Jacksonville, Florida 32226

Tel: 904-696-0010
Fax: 904-696-0019

Email: sales@buffersusa.com
www.buffersusa.com